

# Biotinylated Human PD1 Protein; His-Avi Tag

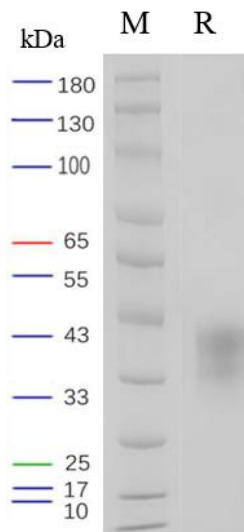
## Product Information

<b>Product Name</b>	Biotinylated Human PD1 Protein; His-Avi Tag
<b>Storage temp</b>	Store at $\leq -70^{\circ}\text{C}$ , stable for 6 months after receipt. Recommend to aliquot the protein into smaller quantities for optimal storage. Please minimize freeze-thaw cycles.
<b>Catalog# / Size</b>	<b>GM-87594RP-25 / 25 <math>\mu\text{g}</math></b> <b>GM-87594RP-200 / 200 <math>\mu\text{g}</math></b>

## Protein Information

<b>Alternative Names</b>	PDCD1,PD1,CD279,SLEB2
<b>Source</b>	Biotinylated Human PD1 Protein; His-Avi Tag (GM-87594RP) is expressed from human 293 cells (HEK-293). It contains AA Leu 25 - Gln 167 (Accession # Q15116-1).  This protein carries a His-Avi tag at the C-terminus.
<b>Purity</b>	> 95% as determined by SDS-PAGE
<b>Endotoxin</b>	< 1 EU/ $\mu\text{g}$ , determined by LAL gel clotting assay
<b>Predicted Mol Mass</b>	18.2 KDa
<b>Formulation</b>	Supplied as a 0.2 $\mu\text{m}$ filtered solution of PBS, pH7.4.
<b>Description</b>	PD-1 (Programmed cell death protein 1), also known as PD1 protein, is an immune regulatory receptor located on the surface of human cells. PD-1 is an immune checkpoint protein that regulates the activation and function of T cells by interacting with its ligands, PD-L1 (Programmed Cell Death Ligand 1) or PD-L2. PD-1 is primarily expressed on activated T cells and B cells, playing a role in suppressing immune responses and maintaining immune system balance.  Research has shown that PD-1 protein plays an important role in the tumor microenvironment, where tumor cells can evade attacks from the immune system by binding to PD-L1. Therefore, the interaction between PD-1 and PD-L1 has become a critical target in tumor immunotherapy. Inhibiting the interaction between PD-1 and PD-L1 can restore the immune cells' ability to recognize and attack tumors, providing a new approach for tumor immunotherapy.

## SDS-PAGE

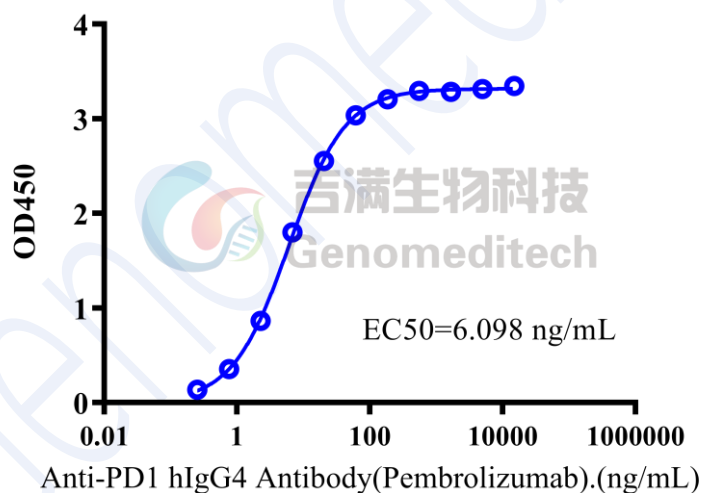


On SDS-PAGE under reducing (R) condition. The gel was stained overnight with Coomassie Blue. The purity of the protein is greater than 95%.

## Bioactivity-ELISA

### Bioactivity-ELISA

0.1  $\mu$ g Biotinylated Human PD1 Protein; His-Avi Tag of per well



Biotinylated Human PD1 Protein; His-Avi Tag (Catalog # GM-87594RP) was immobilized at 1  $\mu$ g/ml (100  $\mu$ L/well) on streptavidin precoated. Increasing concentrations of Anti-PD1 hIgG4 Antibody(Pembrolizumab) (Catalog # GM-52674AB) were added.